

PRINT DATA SHEET



Acrobat 8 (PDF 1.7)
Recommended software for design creation: Adobe Illustrator



CMYK or greyscales in 8 Bits Channel.
RGB colors are automatically converted to CMYK



All fonts must be converted to paths or be embedded
At least 8 mm font height



Minimum resolution in 1:1 format:150 dpi,



Use this color for deep black:
Backlit: CMYK 75/75/75/100



Do not apply crop, bleed or registration marks

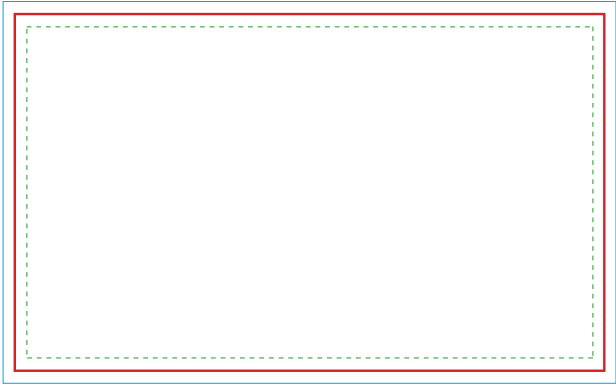





Files are produced as received. If the artwork contains Pantone colors, they must be marked in the file and communicated to us prior to production. Even when Pantone colors are followed, the final appearance may vary due to lighting conditions.



Our team does not make any edits to customer files. If any manipulation or changes are required, the customer assumes full responsibility, and this may result in variations in color and overall appearance.

BIG LED UP



-  Data format
1.2" bleed
-  Final format/
Frame format
-  Safety distance
1" safety distance
from the final format

In the case of continuous graphics over several frames, it is essential to create the graphic file as a whole.

Final format/Frame format

Data format incl. 1.2" bleed

6.6 ft tall

236.22 x 78.74 inch

237.42 x 79.94 inch

8 ft tall

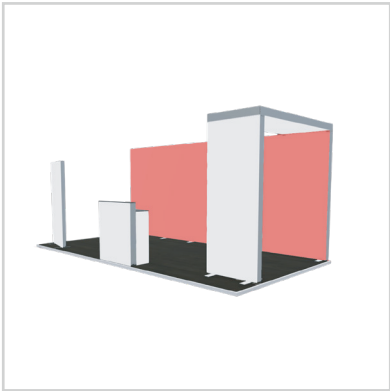
236.22 x 94.49 inch

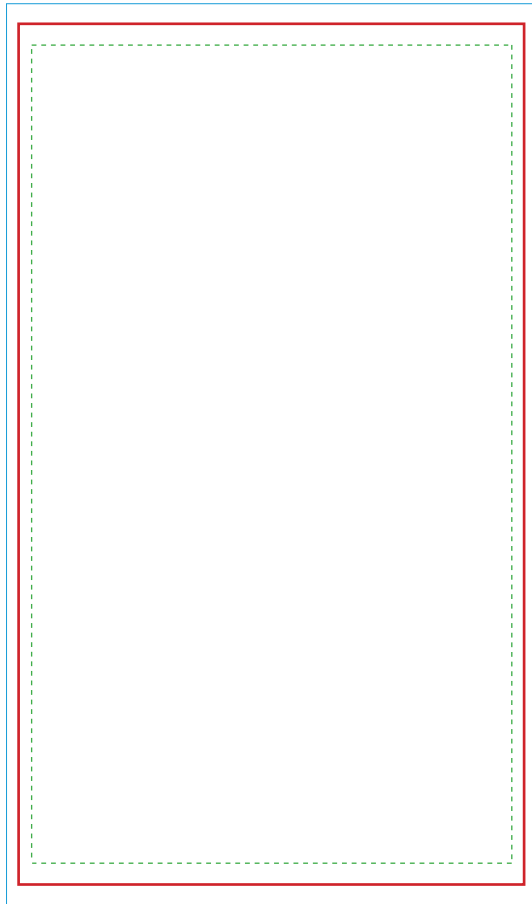
237.42 x 95.69 inch




10 ft tall

236.22 x 117.32 inch

237.42 x 118.52 inch





-  Data format
1.2" bleed
-  Final format/
Frame format
-  Safety distance
1" safety distance
from the final format

In the case of continuous graphics over several frames, it is essential to create the graphic file as a whole.

Final format/Frame format

Data format incl. 1.2" bleed

6.6 ft tall

39.37 x 78.74 inch

40.57 x 79.94 inch

8 ft tall

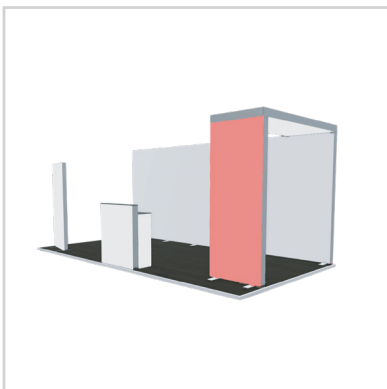
39.37 x 94.49 inch

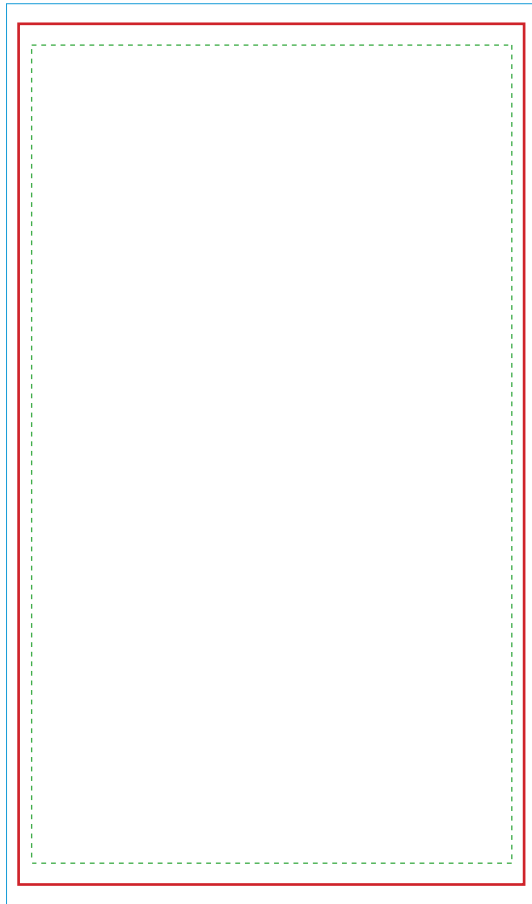
40.57 x 95.69 inch




10 ft tall

39.37 x 117.32 inch

40.57 x 118.52 inch





-  Data format
1.2" bleed
-  Final format/
Frame format
-  Safety distance
1" safety distance
from the final format

In the case of continuous graphics over several frames, it is essential to create the graphic file as a whole.

Final format/Frame format

Data format incl. 1.2" bleed

6.6 ft tall

39.37 x 78.74 inch

40.57 x 79.94 inch

8 ft tall

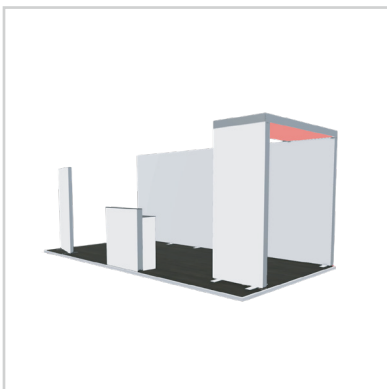
39.37 x 94.49 inch

40.57 x 95.69 inch

10 ft tall

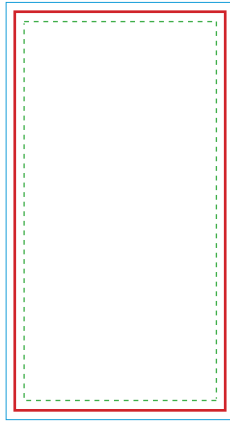
39.37 x 117.32 inch

40.57 x 118.52 inch





TEMPLATE



Data format
1.2" bleed



Final format/
Frame format



Safety distance
1" safety distance
from the final format

In the case of continuous graphics over several frames, it is essential to create the graphic file as a whole.

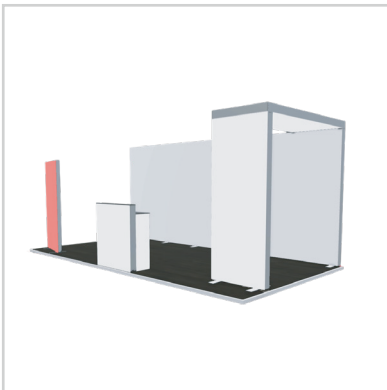
Final format/Frame format

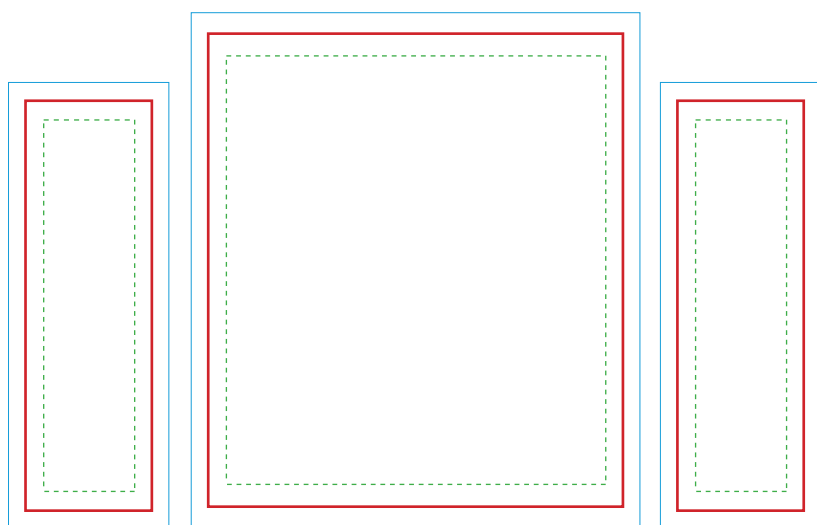
Data format incl. 1.2" bleed

6.6 ft tall

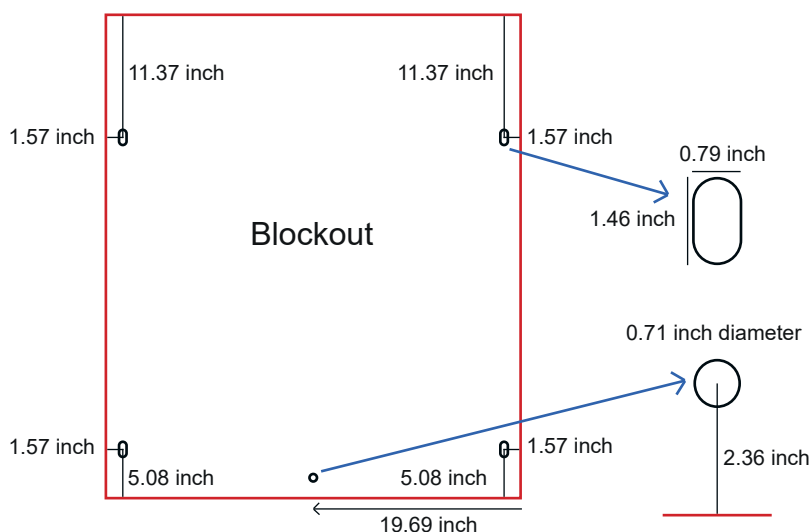
39.37 x 78.74 inch

40.57 x 79.94 inch





- Data format
1.2" bleed
- Final format/
Frame format
- Safety distance
1" safety distance
from the final format



In the case of continuous graphics over several frames, it is essential to create the graphic file as a whole.

Final format/Frame format	Data format incl. 1.2" bleed
39.37 x 45.67 inch	40.57 x 46.87 inch

Final format/Frame format Side panels	Data format incl. 1.2" bleed
12.59 x 39.37 inch	13.79 x 40.57 inch

