

PRINT DATA SHEET



Acrobat 8 (PDF 1.7)
Recommended software for design creation: Adobe Illustrator



CMYK or greyscales in 8 Bits Channel.
RGB colors are automatically converted to CMYK



All fonts must be converted to paths or be embedded
At least 8 mm font height



Minimum resolution in 1:1 format:150 dpi,



Use this color for deep black:
Backlit: CMYK 75/75/75/100



Do not apply crop, bleed or registration marks



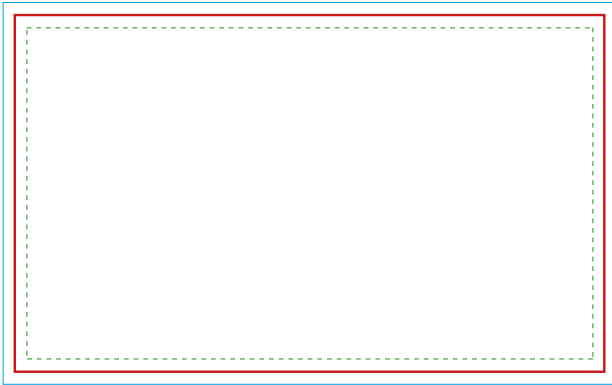
Files are produced as received. If the artwork contains Pantone colors, they must be marked in the file and communicated to us prior to production. Even when Pantone colors are followed, the final appearance may vary due to lighting conditions.






Our team does not make any edits to customer files. If any manipulation or changes are required, the customer assumes full responsibility, and this may result in variations in color and overall appearance.

BIG LED UP

TEMPLATE



-  Data format
1.2" bleed
-  Final format/
Frame format
-  Safety distance
1" safety distance
from the final format

In the case of continuous graphics over several frames, it is essential to create the graphic file as a whole.

Final format/Frame format

Data format incl. 1.2" bleed

6.6 ft tall

118.11 x 78.74 inch

119.31 x 79.94 inch

8 ft tall

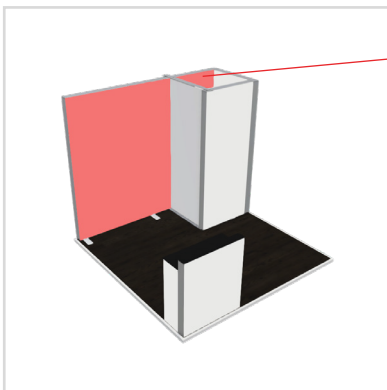
118.11 x 94.49 inch

119.31 x 95.69 inch

10 ft tall

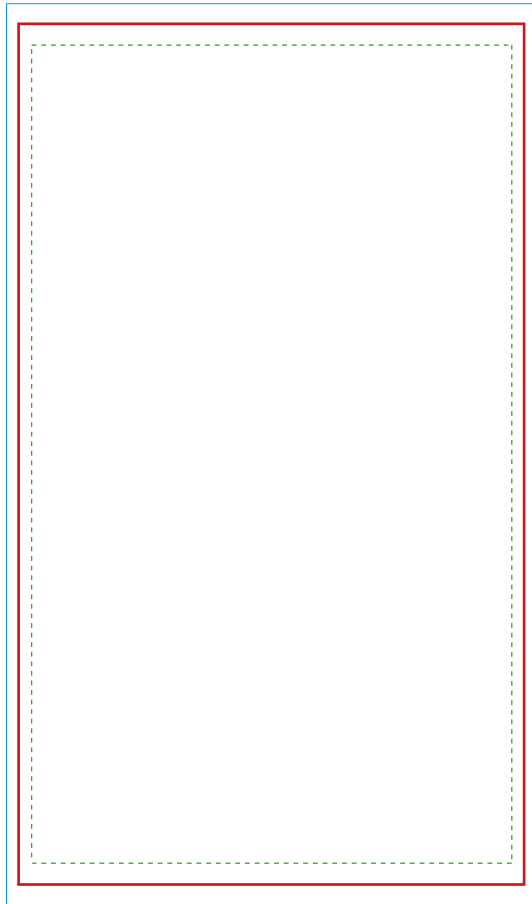
118.11 x 117.32 inch




119.31 x 118.52 inch



Please note that 48.81" of the design final format will not be visible as it will be inside the storage area.





-  Data format
1.2" bleed
-  Final format/
Frame format
-  Safety distance
1" safety distance
from the final format

In the case of continuous graphics over several frames, it is essential to create the graphic file as a whole.

Final format/Frame format

Data format incl. 1.2" bleed

6.6 ft tall

39.37 x 78.74 inch

40.57 x 79.94 inch

8 ft tall

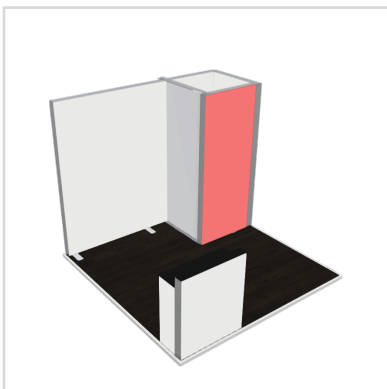
39.37 x 94.49 inch

40.57 x 95.69 inch

10 ft tall

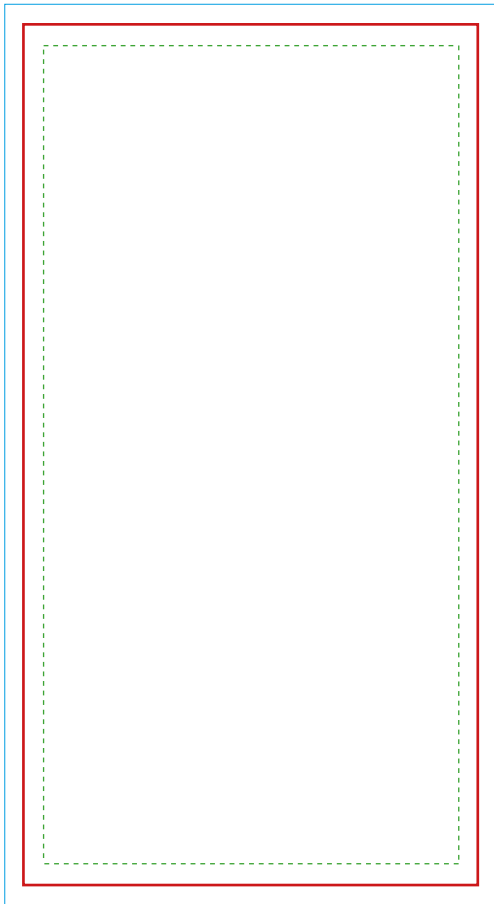
39.37 x 117.32 inch




40.57 x 118.52 inch



BIG LEDUP DOOR

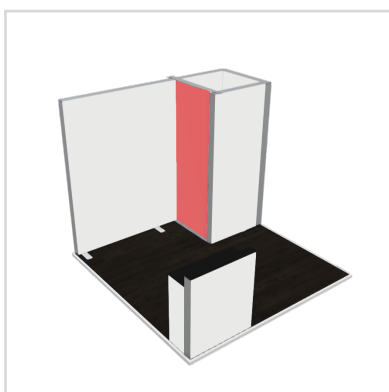
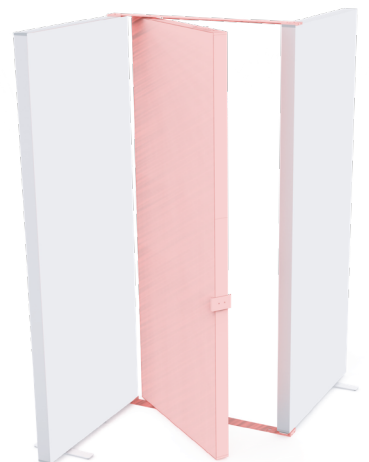
TEMPLATE

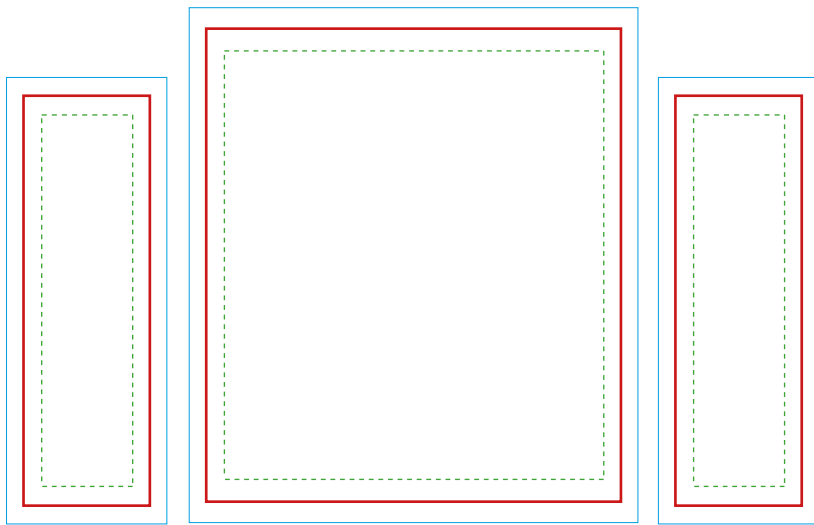


-  Data format
1.2" bleed
-  Final format/
Frame format
-  Safety distance
1" safety distance
from the final format

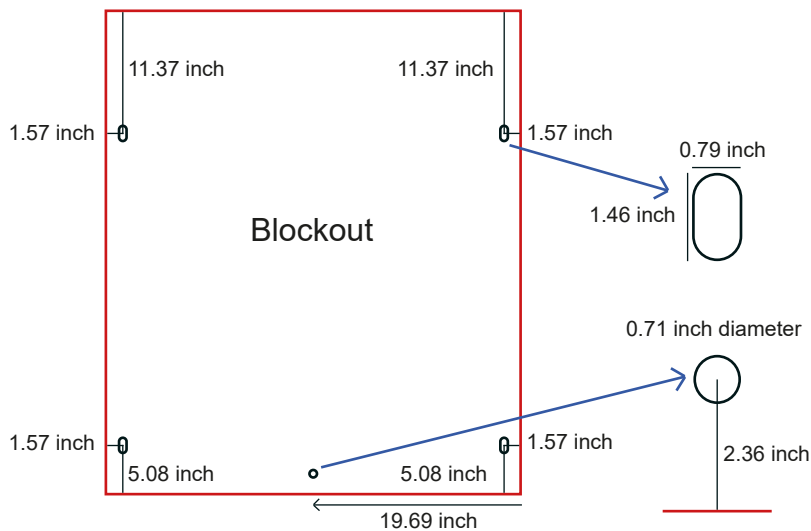
In the case of continuous graphics over several frames, it is essential to create the graphic file as a whole.

System height	Final format/Frame format	Data format incl. 1.2" bleed
BIG LEDUP	BIG LEDUP DOOR	BIG LEDUP DOOR
6.6 ft tall		
78.74 inch	38.58 x 78.43 inch	39.78 x 79.63 inch
8 ft tall		
94.49 inch	38.58 x 97.32 inch	39.78 x 98.52 inch
10 ft tall		
117.32 inch	38.58 x 117.00 inch	39.78 x 118.20 inch





- Data format
1.2" bleed
- Final format/
Frame format
- Safety distance
1" safety distance
from the final format



In the case of continuous graphics over several frames, it is essential to create the graphic file as a whole.

Final format/Frame format 39.37 x 45.67 inch	Data format incl. 1.2" bleed 40.57 x 46.87 inch
Final format/Frame format Side panels 12.59 x 39.37 inch	Data format incl. 1.2" bleed 13.79 x 40.57 inch

